

# FOREST

Revestimiento Monoporosa / Wall Tiles



**FOREST CHELSEA NUT**  
31,6x59,2x1,1cm P3219287 / 100173327 G235  
Butech recomienda junta / Butech recommends joint:  
Colorstuk Rapid n Tabaco B22502011 / 100004304



**FOREST CHELSEA CAMEL**  
31,6x59,2x1,1cm P3219289 / 100173326 G235  
Butech recomienda junta / Butech recommends joint:  
Colorstuk Rapid n Tabaco B22502011 / 100004304



**FOREST SLATE**  
31,6x59,2x1,1cm P3219290 / 100173335 G235  
Butech recomienda junta / Butech recommends joint:  
Colorstuk Rapid n Antracita B22502005 / 100004298



**FOREST SILVER**  
31,6x59,2x1,1cm P3219286 / 100173319 G267  
Butech recomienda junta / Butech recommends joint:  
Colorstuk Rapid n Cemento B22502004 / 100004297



**FOREST PERSIA**  
31,6x59,2x1,1cm P3219295 / 100179117 G235  
Butech recomienda junta / Butech recommends joint:  
Colorstuk Rapid n Blanco B22501001 / 100004294



**FOREST CARRARA BLANCO**  
31,6x59,2x1,1cm P3219288 / 100173324 G235  
Butech recomienda junta / Butech recommends joint:  
Colorstuk Rapid n Blanco B22501001 / 100004294



**FOREST MARMI CHINA**  
31,6x59,2x1,1cm P3219285 / 100173334 G235  
Butech recomienda junta / Butech recommends joint:  
Colorstuk Rapid n Blanco B22501001 / 100004294



## TECHNICAL SPECS · INFORMACIÓN TÉCNICA

EMBALAJE / PACKING							
FORMATO cm	PZ/CJ	M2/CJ	CJ/PAL	M2/PAL	*KG/CJ	*KG/PAL	Adhesivo
31,6x59,2cm	4	0,7	72	50,14	12,08	839,49	Ff-one n

\*valores aproximados. \*approximated values.

# DOVER · DOVER MODERN LINE

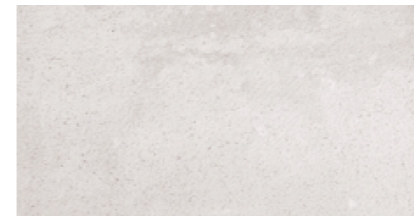
Revestimiento Monoporosa / Wall Tiles



**DOVER ACERO**  
31,6x59,2x0,9cm P3219280 / 100157353 G226  
Butech recomienda junta / Butech recommends joint:  
Colorstuk Rapid n Gris B22502013 / 100004305



**DOVER MODERN LINE ACERO**  
31,6x59,2x1,14cm P3219281 / 100157373 G233  
Butech recomienda junta / Butech recommends joint:  
Colorstuk Rapid n Gris B22502013 / 100004305



**DOVER CALIZA**  
31,6x59,2x0,9cm P3219283 / 100157356 G226  
Butech recomienda junta / Butech recommends joint:  
Colorstuk Rapid n Gris B22502013 / 100004305



**DOVER MODERN LINE CALIZA**  
31,6x59,2x1,14cm P3219282 / 100157374 G233  
Butech recomienda junta / Butech recommends joint:  
Colorstuk Rapid n Gris B22502013 / 100004305



# DOVER ANTIQUE

Revestimiento Monoporosa / Wall Tiles



**DOVER ANTIQUE**  
31,6x59,2x0,9cm P3219277 / 100157355 G233  
Butech recomienda junta / Butech recommends joint:  
Colorstuk Rapid n Cemento B22502004 / 100004297

## TECHNICAL SPECS · INFORMACIÓN TÉCNICA

EMBALAJE / PACKING							
FORMATO cm	PZ/CJ	M2/CJ	CJ/PAL	M2/PAL	*KG/CJ	*KG/PAL	Adhesivo
31,6x59,2cm	6	1,13	72	81,22	15,72	1131,84	Ff-one n
31,6x59,2cm Modern	5	0,94	72	67,68	14,35	1033,2	Ff-one n

\*valores aproximados. \*approximated values.



PAVIMENTO COMBINABLE: SERIE DOVER 44,3x44,3cm - PAG.212  
FLOOR TILES COMBINATIONS: DOVER SERIES 44,3x44,3cm - PAG.212  
- DOVER ANTIQUE ESTÁ FORMADO POR 9 DECORADOS DISTINTOS ALEATORIOS.  
- DOVER ANTIQUE RANGE IS MADE IN 9 DIFFERENT RANDOM PATTERNS.

